

# STAGE 5: CHANGING PLACES

---

INVESTIGATION THROUGH FIELDWORK

PRESENTER: ANGELA NEVIN LEWIS – TRINITY ANGLICAN COLLEGE, ALBURY

UNIT DEVELOPED BY: ANGELA NEVIN LEWIS AND DAVINA GIBB

# SYLLABUS LINKS

---

## Outcomes – a student:

- analyses the effect of interactions and connections between people, places and environments  
GE5-3
- assesses management strategies for places and environments GE5-5
- acquires and processes geographical information by selecting and using appropriate and relevant geographical tools for inquiry GE5-7
- communicates geographical information to a range of audiences using a variety of strategies  
GE5-8

# SYLLABUS LINKS

---

## Content

- Urban settlement patterns - Students:
  - investigate differences in urban settlement patterns between Australia and another country, for example: (ACHGK055)
    - examination of urban settlements to determine patterns of concentration
    - explanation of factors influencing urban concentration eg climate and topography, transportation networks, land use or perceptions of liveability
    - assessment of the consequences of urban concentrations on the characteristics, liveability and sustainability of places

# SYLLABUS LINKS

---

- Australia's urban future - Students:
  - investigate the management and planning of Australia's urban future, for example:  
(ACHGK059)Sustainability
    - discussion of the implication of population forecasts for the future growth and sustainability of urban places
    - explanation of strategies used to create economically, socially and environmentally sustainable urban places
    - proposal of ways for individuals and communities to contribute to a sustainable urban future

# SYLLABUS LINKS - SKILLS

---

- Acquiring geographical information
  - collect, select, record and organise relevant data and geographical information, using ethical protocols, from a variety of appropriate primary data and secondary information sources (ACHGS064, ACHGS073)
- Processing geographical information
  - represent the spatial distribution of geographical phenomena on maps that conform to cartographic conventions, using spatial technologies as appropriate (ACHGS066, ACHGS075)
  - evaluate multi-variable data and other geographical information using qualitative and quantitative methods and digital and spatial technologies as appropriate to make generalisations and inferences, propose explanations for patterns, trends, relationships and anomalies, and predict outcomes (ACHGS067, ACHGS076)
  - apply geographical concepts to synthesise information from various sources and draw conclusions based on the analysis of data and information, taking into account alternative perspectives (ACHGS068, ACHGS077)
- Communicating geographical information
  - present findings, arguments and explanations in a range of appropriate communication forms selected for their effectiveness and to suit audience and purpose, using relevant geographical terminology and digital technologies as appropriate (ACHGS070, ACHGS079)

# WHERE ARE WE?

---

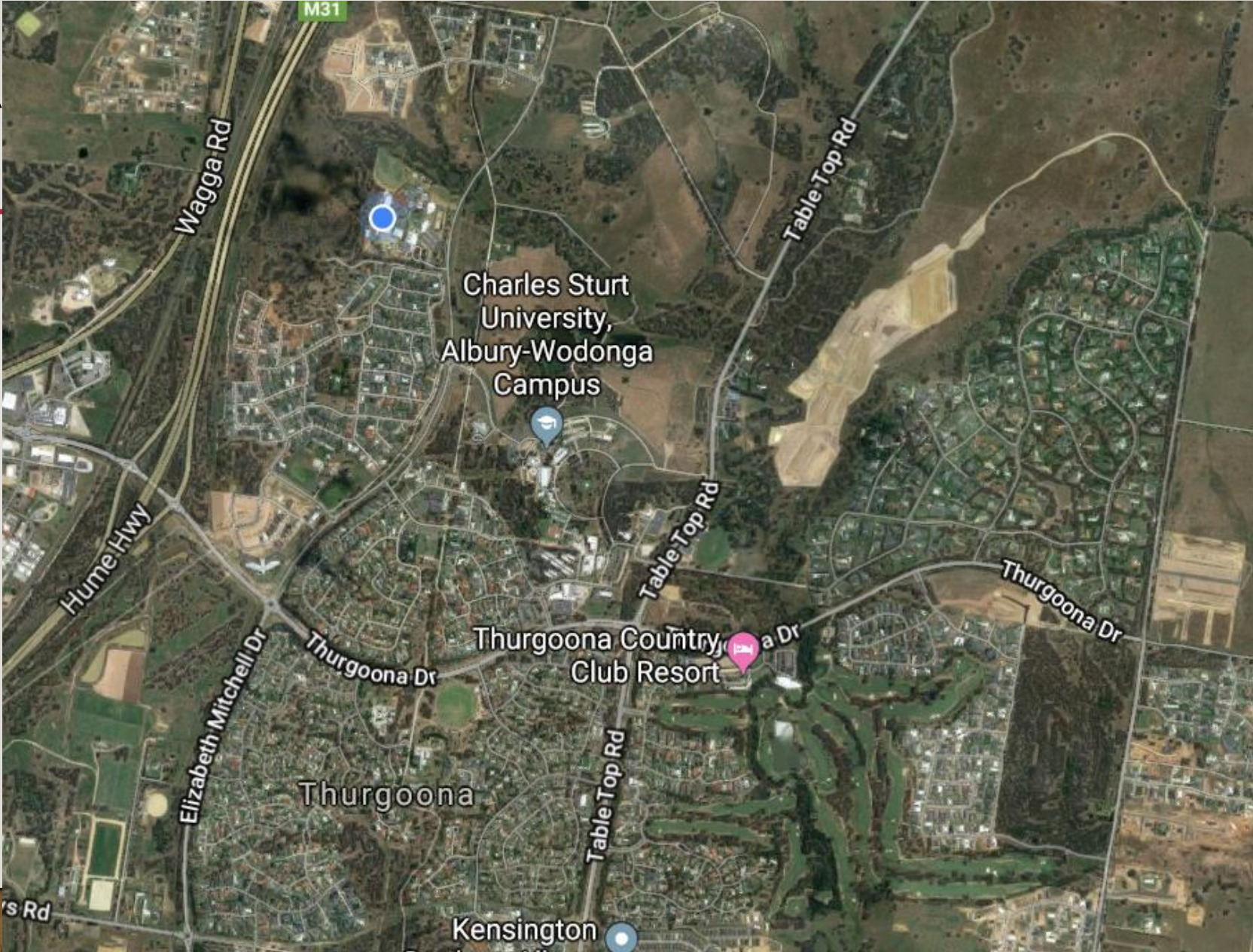


Oblique aerial photograph of Central and South Albury

# THURGOONA

---

Satellite image – google maps



# AIMS

---

- To embed fieldwork into students study of their local community
- To develop students skills – both geographical and analytical
- To create a fieldwork based unit that was assessable for non-Geography based teachers
- To create a low cost fieldwork based unit
- To connect with our local community



# WHAT WE DID?

---

## 2019 Year 9 Geography Assessment Task 1

<b>Unit:</b>	Changing Places
<b>Due Date:</b>	
<b>Weighting:</b>	50%
<b>Raw mark:</b>	/30
<b>Topic:</b>	Albury's urban future
<b>Nature of task:</b>	Geographical Investigation: Research, fieldwork and presentation
<b>Submission requirements:</b>	Hand-in submission - at the beginning of your first Geography lesson in Week 8.

## **Task:**

In class, we have been investigating urbanisation. In this assignment, you will conduct and present fieldwork on Albury's processes of urbanisation and related issues. Some of your findings will be discussed during class-time and compared to Australia, as a whole, and selected international case studies. You will be guided through some fieldwork tasks in class, you will also have the opportunity to develop some fieldwork tasks independently and conduct them in your own time. You will then use your fieldwork as the basis of a written report Albury's growth and development.

Any surveys undertaken must be undertaken in person – no electronic surveys allowed

**The following three inquiry questions will guide your research and final project**

### **Inquiry questions**

1. What is Albury's urban settlement pattern?
2. Why do people move to and from Albury?
3. How is Albury's urban settlement managed and what are the long-term plans for Albury?

### **Findings must be presented as**

- A fieldwork portfolio – containing all fieldwork tasks completed with a 1 paragraph evaluation of the insights gained
- A written report - 500 word

# CHALLENGES

---

- Students formulating their own inquiry questions
- Ability of students first semester compared with to second semester
- Students resistant at first – couldn't just google respond
- Selecting an appropriate presentation method – this year insisted on universal report format – allowed for scaffolding for students with ILP more easily than other means to present

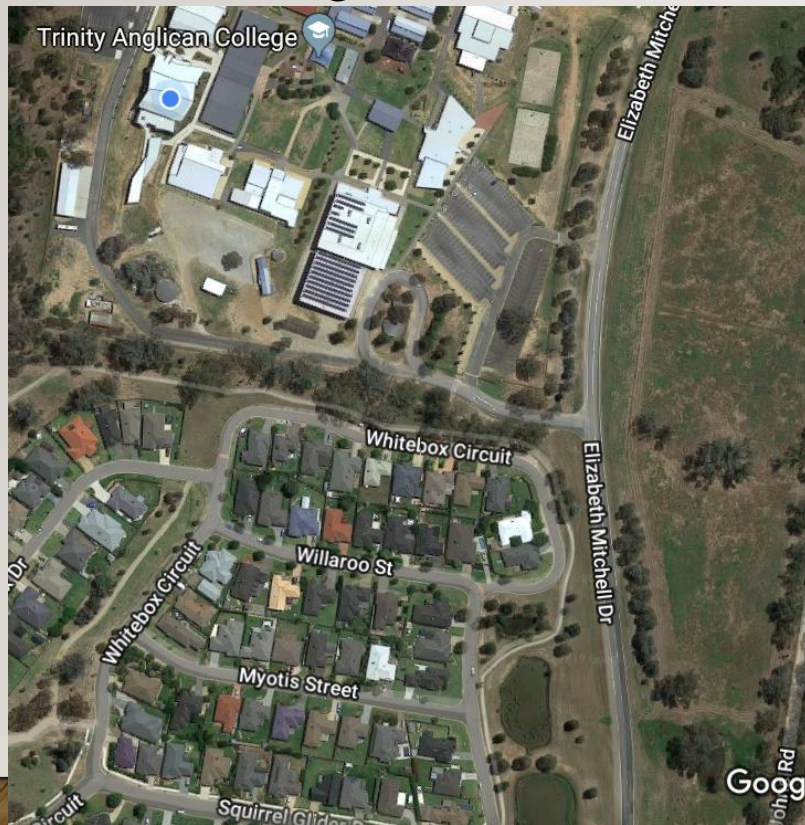
# HOW WE DID IT

---

- Localised fieldwork task
- Guest speakers – town planner Albury City Council, local environmental action group
- Teacher-guided analysis
  - What have you observed/notice
  - Positives and Negatives
  - Implications for management – social, economic and environmental

# LINE DRAWING

- Line drawing



Line drawing of Mitchell park



# TRAFFIC SURVEY



Traffic Survey - The Grange Roundabout 7/3/19

Time	Number of cars with 1 occupant	Total
12:15 - 12:20	⊗ ⊗ ⊗ ⊗ ⊗ ⊗ ⊗ ⊗	17
12:20 - 12:25	⊗ ⊗ ⊗ ⊗ ⊗ ⊗ ⊗ ⊗	18
12:25 - 12:30	⊗ ⊗ ⊗ ⊗ ⊗ ⊗ ⊗ ⊗	19
12:30 - 12:35	⊗ ⊗ ⊗ ⊗ ⊗ ⊗ ⊗ ⊗	20

⊗ = 2 cars

Time	Number of cars with 2+ occupants	Total
12:15 - 12:20	⊗ ⊗ ⊗	6
12:20 - 12:25	⊗ ⊗ ⊗ ⊗ ⊗	9
12:25 - 12:30	⊗ ⊗ ⊗	5
12:30 - 12:35	⊗ ⊗ ⊗ ⊗	7

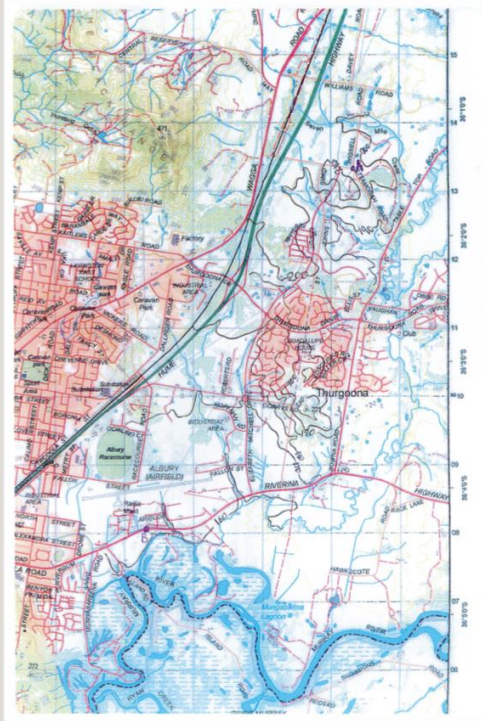
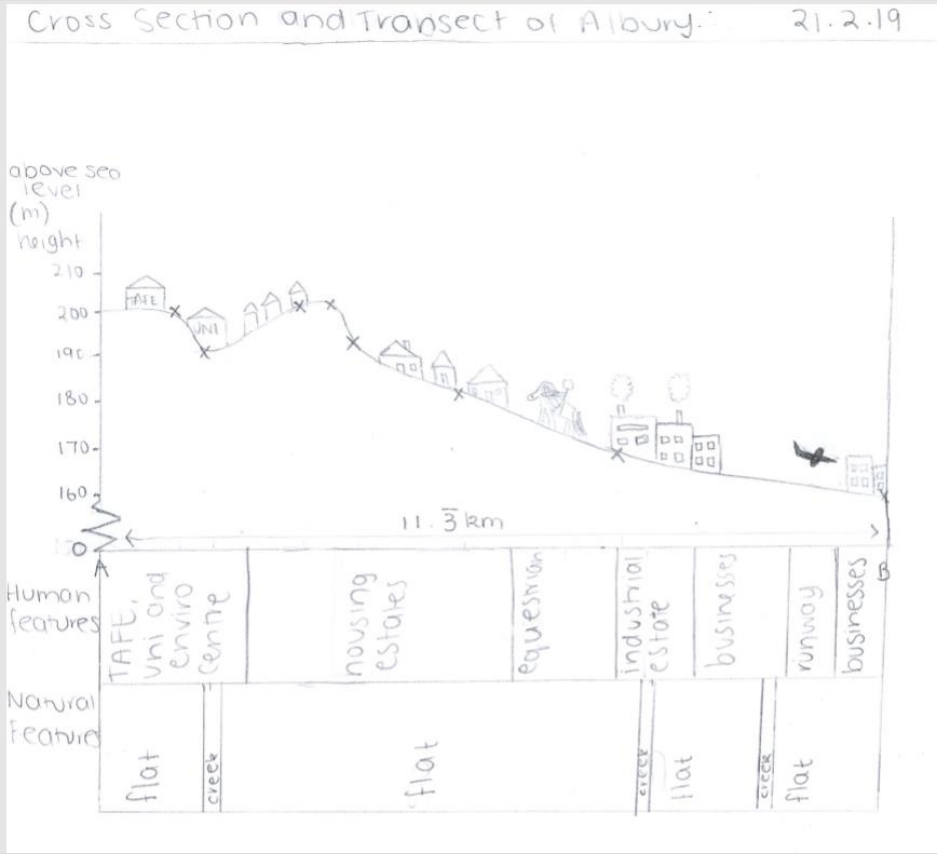
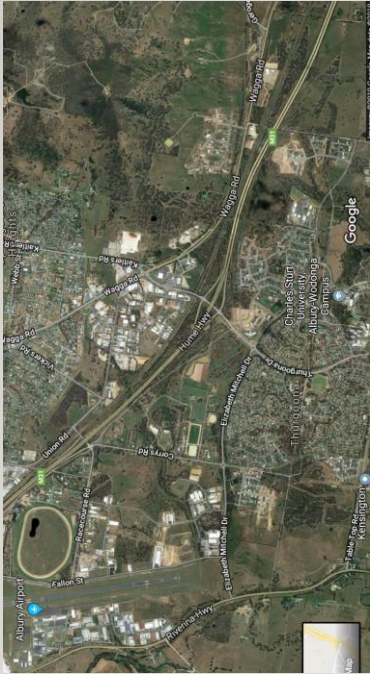
⊗ = 2 cars

Time	Number of Trucks	total
12:15 - 12:20	⊗ ⊗ ⊗	3
12:20 - 12:25	⊗	1
12:25 - 12:30	⊗ ⊗	2
12:30 - 12:35	⊗	1

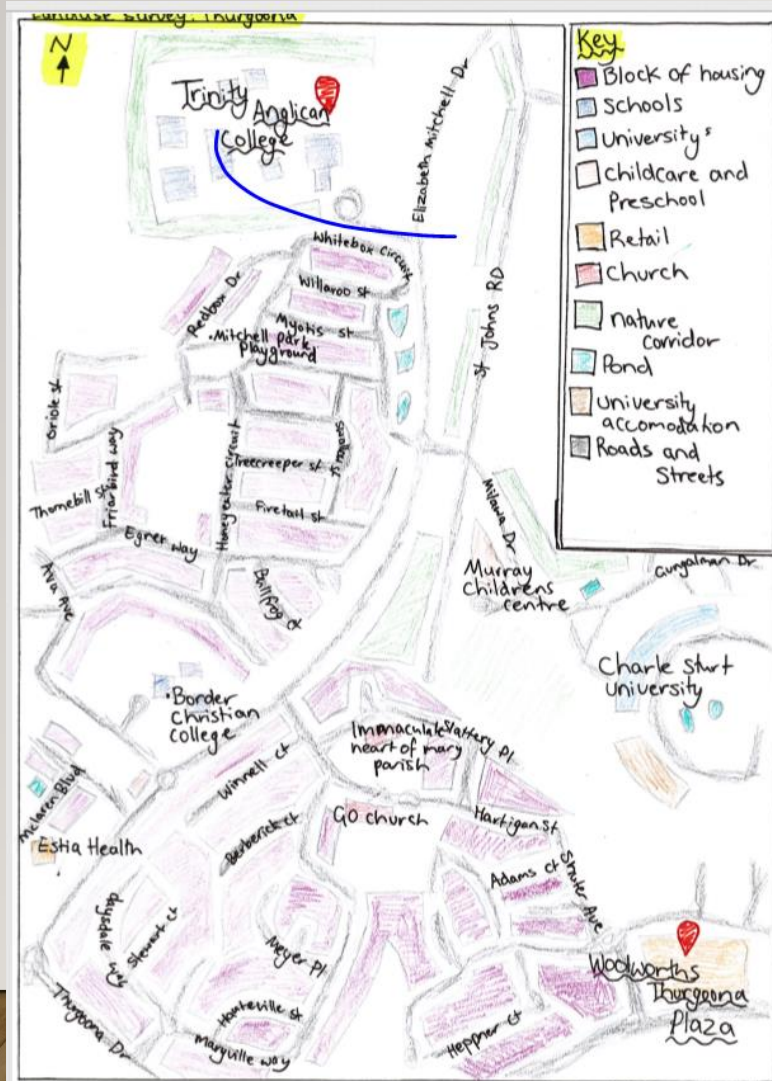
⊗ = 1 truck



# TRANSECT – VIRTUAL FIELDWORK



# LANDUSE SURVEY



## Analysis of landuse survey:

This landuse survey, shows us the many ways the land of Thurgoona and surrounds has used to get the most out of it. The land has been used in many positive and effective ways. There are many education facilities and job opportunities in close vicinity to housing and main roads. This allows minimised pollution, as distance need to be travelled is less. Also the ability to walk or ride to places is very positive. The use of low density yet compact housing allows residents to feel they have space to breathe, whilst also having the maximine amount of people living there. This has positive impacts of the economy as well as social benefits as you can live close to friends and family. However having low density housing doesn't leave an ideal amount of land for nature. But whilst saying this there is the occasional nature corridor which supplies a safe home for native animals and an escape to appreciate nature. Having the freeway close is practical however also generates alot of noise pollution. But at least there are some trees that act as natural barriers. Overall it is a relatively good use of land but could work more on environmental aspects. Also the lack of much retail degrades social benefits.

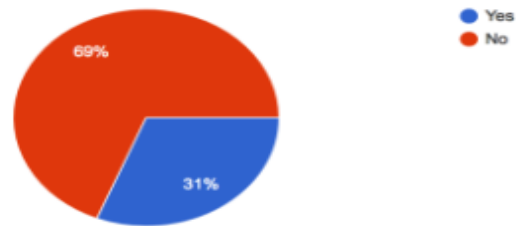


# INDEPENDENT FIELDWORK - SURVEYS

## Survey of Albury Community

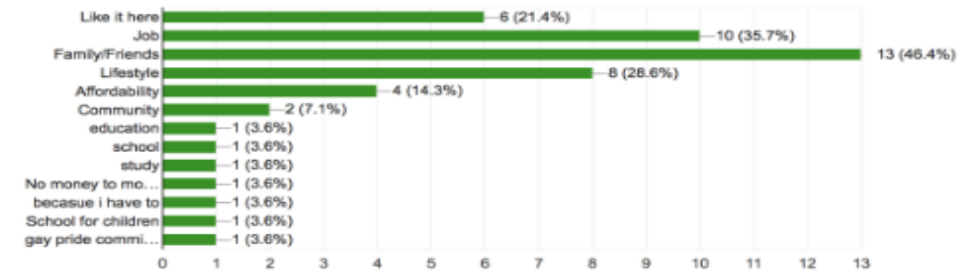
Does your home have renewable energy?

29 responses



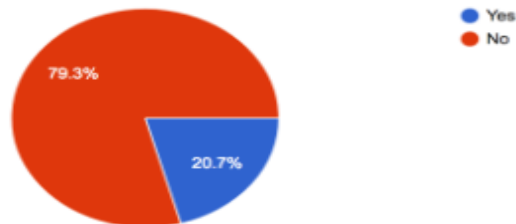
What is your main reason for staying in Albury (select where applicable)

28 responses



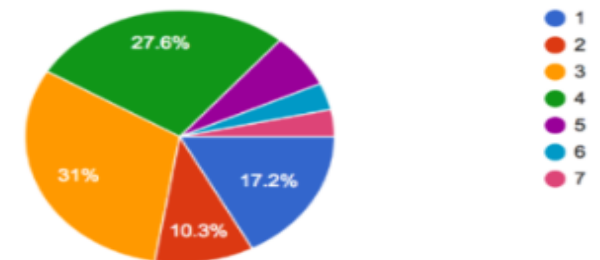
Where you born in Albury/Wodonga?

29 responses



How many people live in your household

29 responses



# COMMUNICATION

---

- Websites
- Multimedia
- Oral presentation
- Strategic plan for Albury's future development
- Fieldtrip report – scaffold provided for students with ILP

# SAMPLE OF STUDENTS WORK

---

- <https://changing-places.my-free.website/fieldwork>

# FIELDTRIP REPORT

## Yr 9 Geography Fieldtrip Report Guidelines

Through completing your fieldwork tasks you should have some insights into the following inquiry questions

1. What is Albury's urban settlement pattern?
2. How is Albury's urban settlement managed and what are the long-term plans for Albury? Here you can consider what is being managed well and what areas need to be managed better

**Now you need to develop your analysis into a written response. In Geography a key method for communicating findings is through the report format.**

**In the report format you must use sub-heading to organise your ideas, some other features include**

- Using dot points where appropriate

Including graphs, maps, photographs, sketches where appropriate



# FIELDTRIP REPORT GUIDELINES

---

**Some ideas for sub-headings in this report include**

1. Introduction
2. Overview of fieldwork undertake
3. Albury's settlement patterns
4. Effective management of Albury's urban settlement
5. Problems associated with Albury's urban settlement
6. Long-term plans for Albury's urban settlement

**The word limit for the fieldwork report is 500 words**

## Fieldtrip Report – Urban Growth in Albury/Thurgoona - SCAFFOLD

Work through the following tasks to complete your fieldtrip report on Albury/Thurgoona's urban development – if you complete all of these sections your fieldtrip report will be complete.

### 1. Introduction

Albury is located \_\_\_\_\_. It has a population of \_\_\_\_\_.

Thurgoona is located \_\_\_\_\_. It is Albury's key growth area and this can be seen in \_\_\_\_\_.

### 2. Overview of fieldwork undertaken

The fieldwork that has been undertaken in this study of urban development includes;

A.

B.

C.

D.

The following guest speaker also assisted in this study

1. \_\_\_\_\_ from \_\_\_\_\_

1. Albury's settlement patterns

The line drawing shows \_\_\_\_\_

The transect shows \_\_\_\_\_

The landuse map shows \_\_\_\_\_

Therefore these fieldwork tasks show the main forms of landuse in Thurgoona are

---

---

---

2. Effective management of Albury's urban settlement

Some of the POSITIVES associated with how land is used in Albury and Thurgoona include \_\_\_\_\_

---

---

**LOOK AT THE ANALYSIS OF YOUR LINE DRAWING, TRANSECT AND LANDUSE MAP TO FIND POSITIVES THAT YOU HAVE LISTED**

3. Problems associated with Albury's urban settlement

Some of the NEGATIVES associated with how land is used in Albury and Thurgoona include \_\_\_\_\_

---

---

**LOOK AT THE ANALYSIS OF YOUR LINE DRAWING, TRANSECT, TRAFFIC SURVEY AND LANDUSE MAP TO FIND NEGATIVES THAT YOU HAVE LISTED**

4. Long-term plans for Albury's urban settlement

In the future Albury City Council plans to develop Thurgoona by \_\_\_\_\_

---

---

# SAMPLE OF WORK

## Geography Assessment – Fieldwork Report

### Introduction

This Term in Geography we undertook various fieldwork that shows us a lot about the area of Thurgoona and places near Thurgoona's urban settlement patterns.

### Overview of fieldwork undertake

My fieldwork shows us a variety of things about the Thurgoona area like:

#### Line Drawing

- The area has a lot of low compact houses
- A lot of trees have been cleared to make room for housing which badly affect wildlife around Thurgoona

#### Transect

- The shape of land in Thurgoona is flat with a very gradual incline
- This type of land allows for a wide range of uses for the land including an airport and an equestrian centre.

#### Traffic survey

- There is not a lot of public transport around Thurgoona
- The traffic flows freely between 12:15-12:30pm (but the survey would be very different if it was done later in the day around 3:00pm, or earlier in the day around 8:30am when school drop off and pick up occurs. That is when there is a lot more traffic).

#### Land use survey

- Some of the housing estates in Thurgoona are next to the freeway which is negative because of the noise pollution from the freeway, but it can also be a positive because we have a direct access to the freeway.
- Thurgoona has no clothing shops.

### Albury's settlement patterns

The plan for Albury's settlement patterns around the areas of Thurgoona and Wirlinga is that council wants it to be set up so it is a separate community to Albury. They want to ensure that Thurgoona has everything it needs like housing, shops, public transport, business, retail shops, schools, universities and childcare, doctors, pharmacy and more to ensure that Thurgoona is its own separate community to Albury.

### Long-term plans for Albury's urban settlement

In order to achieve this goal of Thurgoona being its own community they are building a range of things around Thurgoona. They are building things like more housing, petrol stations, food shops, retail shops and more things to come in the future.

The plans for the development of the land across from the Thurgoona Plaza:



### Problems associated with Albury's urban settlement

All this development has a major impact on the environment as we continue to cut down trees in order to build more houses. This destroys homes and food for wildlife. But it doesn't just affect the wildlife it also affects the people living in Thurgoona who have said through surveys undertaken by the Thurgoona Community action group that they have moved to Thurgoona because they enjoy the bush county feel but Thurgoona is becoming less bush and more urban. There is also a lot of noise pollution with the airport and the freeway that can affect the people living in Thurgoona.

### Effective management of Albury's urban settlement

There are people around Thurgoona, like the Thurgoona Community Action group, that are trying to improve the environmental damage and protect some of the endangered wildlife around Thurgoona like squirrel gliders, Sloane froglets and regent honey eaters which are native to Australia and are dying due to the damage we are doing to the environment.



# SAMPLE OF MODIFIED TASK

## Fieldtrip Report – Urban Growth in Albury/Thurgoona - SCAFFOLD

Work through the following tasks to complete your fieldtrip report on Albury/Thurgoona's urban development – if you complete all of these sections your fieldtrip report will be complete.

1. Introduction

Albury is located in NSW and is located on the border of NSW and Victoria . It has a population of 47 974 people. It is Albury's key growth area and this can be seen in lots of new house and schools and a new super market .

2. Overview of fieldwork undertake

The fieldwork that has been undertaken in this study of urban development includes;

A we did a line drawing

B and a traffic Suvey

.

4.

The following guest speaker also assisted in this study

1. there are more hoses going up

3. Albury's settlement patterns

The line drawing shows that the storm water has a place to go and it is a nice fecher

The transect shows that there are lots of cars

The landuse map shows that we have used lot of farming land

Therefore these fieldwork tasks show the main forms of landuse in Thurgoona are howes and schools

4. Effective management of Albury's urban settlement

Some of the POSITIVES associated with how land is used in Albury and Thurgoona include lots of opatuitys for schools and jobs we got a lot of junta schools and high schools and lots of house for people and famils

# MY 'TAKEAWAYS'

---

- Students engagement levels increased when actually '**doing**' Geography – e.g. undertaking fieldwork, tapping into local knowledge, developing their skills through direction and guidance
- Even non-geographical trained Geography teachers can include elements of fieldwork when investigating topics when focusing on the human environment
- With guidance and scaffolding students of all abilities can undertake and analyse fieldwork, and draw meaningful conclusions
- Non-google-able assignments are possible